

Product GUIDE



COMMITTED TO YOUR SUCCESS—WITH PRECISION

At RotoMetrics®, we're the world leader in designing and building precision rotary tooling, with expertise in Tag & Label, Web Fabrication, Packaging and more. That's why we've built a perfectly synchronized team dedicated to your success in three defined ways.

Reliable Solutions

- State-of-the-art technology integrated into large-scale manufacturing processes
- Products built and extensively tested to exceed your standards
- On-site problem solving—we make house calls

Responsive Support

- Synchronized manufacturing processes and streamlined supply chain
- Dedicated sales and support teams for fast quotes and expedited service
- In locations where you do business



Manufacturing
& Repair Facilities



Repair Facilities



Technical Support
& Sales Offices

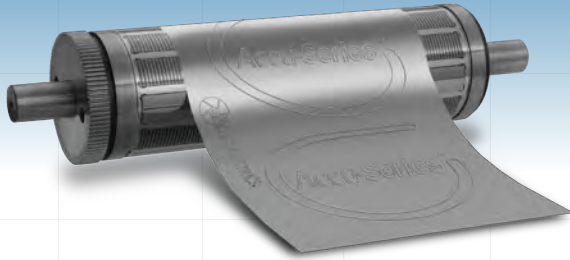


Exceptional People

Precision requires more than the right tools. It demands experience, expertise and skill from a perfectly synchronized team—exceptional people who deliver reliable cutting solutions that work right the first time, every time.

That's the power of human precision.

PRECISION ROTARY TOOLING



Accu-Series™ of Flexible Dies

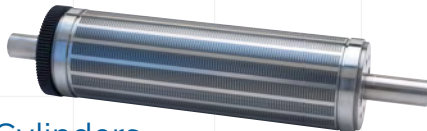
Our flexible die portfolio allows you to choose the product features that are most important to you. Every time. For many layouts, same day turnaround is available. Whether short run jobs, digital applications, abrasive materials, or thin film applications, we have a solution for all your die cutting requirements.

AccuSmart™ is the smart choice for short runs and quick turnaround. It's optimized for paper liners and nickel coated for corrosion resistance.

AccuPrime™ is the "workhorse" of our Accu-Series and it can convert a wide range of both paper and synthetic face stocks. Add FlexPlus® or laser hardening to extend die life.

AccuStar® UltraFilm™ features the exacting precision tolerances required to convert the most challenging films and liners in today's market. Laser hardening also available.

AccuStar® Life™ is the ultimate in die life for most abrasive materials, coatings and inks. FlexPremier® coating guarantees superior durability. A great choice for metal-to-metal applications.



Magnetic Cylinders

The **AccuBase™** magnetic cylinder is precision engineered with an industry-leading price-to-performance ratio. Tight tolerances enhance flexible die accuracy. **AccuBase™XT** with through-hardened D2 journals and bearers offers extended service life for the tough jobs.



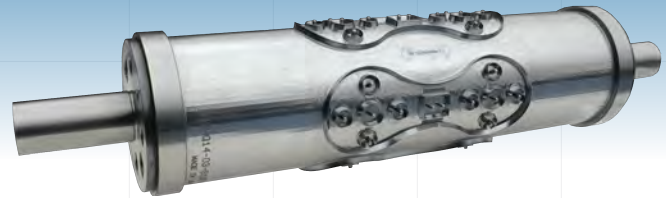
Print Cylinders

Manufactured to exacting requirements, ensuring the greatest accuracy and consistency. Available with ground gears for superior print quality.

Standard cylinders have the fastest turn around times and offer maintenance-free performance at an affordable price.

RotoGuard™ cylinders have added surface protection from scratches and corrosion. Anodized in house ensures consistency and increases life.

RotoGuard™XT cylinders have an EXCLUSIVE enhanced surface coating produced in house. Provides extreme protection against scratches making it the most durable solution of its kind.



Solid Dies

Our solid die portfolio is unique and customized to offer the best solutions for even your most complicated job. Short runs to extremely long, simple patterns to complex, easy papers to challenging materials—we customize solutions to fit applications using experience and precision. Our tools cut to a backing material or all the way through.

RD300 has the Power of Endurance for all substrates, metal-to-metal cutting and even the most abrasive materials. The tightest tolerances on the market for extreme precision on cut depth and part size—completely machine finished.

RD250 has increased durability and performance with specially hardened steel. Highest accuracy for precision cut depth. Superior for all to-liner projects as well as many metal-to-metal applications.

RD100 cuts most substrates and is engineered for longer lasting runs. A value oriented die for metal-to-metal converting plus a fast turnaround time.

RD90M is an excellent value to-liner die solution. Perfect for paper or film. Express Lane™ program available for fast delivery.

RD200 is a machine finished, enhanced tolerance tool built for long runs that demand increased accuracy. Designed for to-liner applications, it converts most substrates including many thinner filmic materials. Express Lane™ program available for fast delivery.



Anvils

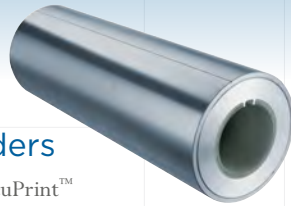
Base Anvils are versatile anvils usable for the full range of converting methods. Available in different steel grades—to match the requirements of the cutting die.

Adjustable Clearance Anvils (ACA) can be adjusted up/down to change the cutting clearance. The infinite adjustability allows better control of the cut depth. Available with D2 bearers and body for enhanced durability.

AccuStrike™ Anvils are designed for accurate and precise control of the converting process with parallel and independent adjustment of the bearers for complete control and ultimate adjustment flexibility. Maintenance and calibration free.



PRECISION ROTARY TOOLING



AccuPrint™ Sleeve Cylinders

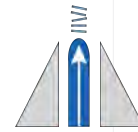
Maximize print sleeve durability with AccuPrint™ featuring a proven polycarbonate inner core and an aluminum outer casing. This combination provides unmatched registration accuracy and tolerance control on today's servo-driven presses. Combine with RotoMetrics® Hardcase® surface technology for industry-leading durability.

Additional Offerings

- Gears
- Specialty Flexible Dies for Folding Carton Applications
- Pressure Gauges
- Scoring/Slitting Products
- Rotary Pressure Cutting
- Inking Solutions
- Die Blocks
- Ask your rep about the many other solutions we offer

Material Movement Solutions

Need die cut parts removed from the substrate or the carrier? We offer proprietary ejection and vacuum technology solutions so jobs run more effectively and efficiently.



Pin Eject

Pushes material away using compression systems.



Vacuum

Pulls material through the die.



Air Eject

Compressed air blows material away.

Bring your die cut part movement challenges to us and let's discuss the best solution for your job.

We offer comprehensive manufacturing operations & service capabilities on five continents.

- In-House Technical Support
- *Express Lane Delivery* and *Express Lane Repairs*
- Long Standing OEM Partnerships
- Cost-Effective Performance
- MyRoto Online Ordering
- Regional Service, Retooling, Repair and Support Locations
- Strategic Material Supplier Relationships
- Converting Technology Center Lab
- 24/7 Service and Support
- Dedicated to One-to-One Customer Service Representatives



Our world-class team is focused on your success. And with our global presence, you get access to the local support you need to succeed.

To place an order, or to inquire about any of our products, you can call the location nearest you.



World Headquarters USA

800 Howerton Lane, Eureka, MO 63025

Toll-Free: 1 800 325 3851 | Phone: +1 636 587 3600



European Headquarters

Freephone (UK): 0800 181697

Freephone (Ire): 1 800 535355

Tel: +44 (0) 1922 610000

Virginia (USA)

Toll-Free: 1 800 336 7686

California (USA)

Toll-Free: 1 800 325 3851

Northeast (USA)

Toll-Free: 1 800 336 3437

Chicago (USA)

Tel: 1 630 932 8605

Canada

Toll-Free: 1 800 668 4648

Tel +1 905 858 3800

China (Mainland)

Tel: +86 186 2625 2688

Tel: +86 159 0084 9481

Hong Kong/China

Tel: +852 6992 3922

Tel: +86 155 4670 0853

Australia

Tel: +61 3 9358 2000

Brazil

Telefon: +55 11 2623 1500

France

Tel: +33 (0) 164 796 100

Germany

Freecall: 0800 7686835

Tel: +49 6134 72 62 0

India

Tel: +91 22 28549090

Italy

Numero Verde: 800 215 616

Tél: +39 02 93 54 01 15

Southeast Asia

Tel: +66 38 447487



Unlock the power of precision by visiting rotometrics.com or emailing us at sales@rotometrics.com.

Product availability may vary by region. Contact your sales representative for additional details.